



COMPANY PROFILE 2024



INDEX

- 3 About Us**
- 4 Why Choose us**
- 6 Our Services**
- 11 Our Clients**
- 14 Certifications**
- 35 Account Details**
- 36 Contact Us**



INTRODUCTION

Jecs Mining Suppliers and Contractors Limited, a wholly owned Zambian firm is located at plot number 40065, Mulilakwenda Road, Heavy industrial Area, Kitwe and was established on the 4th of January, 2008 with a purpose of providing high quality contractual works, various mining services and industrial products. We believed that, to augment the need for providing engineering services, a company manned by professionals shall be established for the purpose of providing diversified services which highlights mainly on engineering services, particularly on steel structure. This company will cater the needs for the design, detailing and fabrication of almost all imaginable structural steel structures.

The company was established to supply bespoke fabricated structures in the industry. Welding and boiler making services. Our plant has all the available machines and equipments, which is of great help in fabricating steel structures in the soonest possible time.

Jecs Mining Ltd is able to design and fabricate different types of steel structures such as buildings, warehouses, pipe racks, pipe/cable bridges, platform, equipment support and others which can be used for commercial, industrial, petrol-chemical and any other purposes. Our company is very flexible in providing the needs of our different clients. We can do the design up to the fabrication and supply of steel structures and in case where our clients already have their design, we can still help by just providing them our fabrication and supply of their steel structures.



OUR MISSION

International quality standard as well as any local or regional codes and be among the top structural fabricators and designers, offer best Boiler making and welding services.

In the regional perspective, our mission is to provide and develop products and services to meet the needs and expectations of our customers relative to the maxims "fitness for the purpose"; "safe in use" and the "value for money" philosophy.

Our rigid quality assurance/control procedures are maintained and implemented to the highest level of standard. This is in order to ensure that the product quality and services will meet the stringent requirements of our customers and their specifications.

We have set-out our corporate visions, goals and objectives, and in order to build and achieve them in optimum time, will require that each and every individual associated with the company to possess work quality of the highest possible standard. It is our aim to be experienced in our field of:

To be productive, a pillar and a contributing factor to the growth and resiliency of the countries highly competitive steel fabrication industry. This, in essence, is our company tenet, driving principle and belief. Expertise, showing flexibility, innovation and possessing a positive approach to all our undertakings. Jecs mining Ltd is forging ahead to serve its purpose.

WHY CHOOSE US

The diversity of our design and build installations, roll-out programs and branch improvement schemes, guarantees that we will be bringing innovative solutions, experience of type and a collective of expertise to your next project. Jecs Mining has an integrated approach to providing engineering services allows our clients to benefit from the commercial and logistical advantages of engaging a single supplier to undertake the telecom, electrical and mechanical elements of a project.

We take responsibility for our clients and their assets, and work to resolve problems whenever they arise. Even when something is beyond our control, we will make recommendations and offer assistance to carry out remedial works quickly and efficiently. The level of repeat business, referrals and customer loyalty that we enjoy at WG&R is a mark of our commitment to customer satisfaction and value engineering.



Jecs Mining Suppliers and Contractors Limited offers engineering services road and bridge construction and to design and fabricate different types of steel structures as well as project management. Construction services include overall design, cost planning & control and ultimate construction, rehabilitation and maintenance of large and small Building, include banking facilities refurbishment; execution of Structural and Civil Engineering (Bridge and Roads) projects. To enable us remain major players in all stages of value chain supply, we plan to be the pillar and a contributing factor to the growth and resiliency of the countries with highly competitive steel fabrication industry.



Jecs Mining Suppliers & Contractors Limited is committed to delivering to its clients highest quality of services and workmanship, with a particular focus on safety, quality and environmental management. Through the skill and dedication of our highly experienced Team, JECS Mining Ltd consistently strives to deliver each project in a competitive and cost effective manner on time and within budget.

Below is a summary of our services provided to the industry;

- ▶ **STRUCTURAL STEEL FABRICATION**
- ▶ **TRANSPORT AND EQUIPMENT HIRE**
- ▶ **LABOUR HIRE FOR SHUTDOWNS**
- ▶ **ELECTRICAL CABLE REPAIRS & INSTALLATION**
- ▶ **TRAY/BUCKET REBUILDS & REPAIRS**
- ▶ **HEAVY MACHINERY REPAIRS & MAINTENANCE**
- ▶ **SUPPLY OF GOODS**



STRUCTURAL FABRICATION

JECS Mining Ltd provides structural steel and piping fabrication, such as Universal Cable Coupler Skids,(fabrication of cable stands done for Lumwana purchase order attached), Fabrication of Heavy Duty Dump truck ladders and walkways.

JECS Mining Ltd is able to design and fabricate different types of steel structures such as buildings, warehouses, pipe racks, pipe/cable bridges, platform, equipment support and others which can be used for commercial, industrial, petro-chemical and any other purposes. Our company is very flexible in providing the needs of our different clients. We can do the design up to the fabrication and supply of steel structures and in cases where our clients already have their design, we can still help by just providing them our fabrication and supply of their steel structures.

JECS Mining has experienced Engineers in Structural Steel and Reinforced Concrete Detailing (including Design and production of Structural Steel Workshop and Mechanical Drawings).

The Engineer is also experienced in rehabilitation of excavator and Dump Truck Buckets through Wear Facing and Build up to achieve reliable and prolonged life of Earth Moving and Mining Equipment.

GENERAL TRANSPORT SERVICE

JECS Mining Ltd provides various transport services ranging from Hire of Rosa and Coater buses for Mining employees transportation and chauffeur or own driven salon car, to a fleet of light trucks for bulk product distribution. All our trucks are Mine compliant and operated by highly qualified and trained drivers. We operate a range of tippers and dump trucks for heavy haulage and waste metal disposals. Under general transport we have the following categories.

RE-OF TELE HANDLER MACHINE

JECS Mining Limited has recently acquired a Manitou Tele handler machine MHT-X 14350. It has a max load capacity of 35,000 Kg, Max lifting weight of 13.6m and power of 350 HP/260 Kw. It is reliable, and performs well in a mining environment and site. We have reliable machine operators who are highly trained and experienced to operate this machine.

HIGH PRESSURE WASHERS

We offer a wide range of high pressure washers for hire ranging from Power washing trailer hot or cold water Pressure Washers with a 23 HP system, dual gun, GPM/3500 PSI to trailer mounted Hot waterpressure Washer with dual gun, 8 GPM/3600 PSI. These work well in the washing of heavy duty plant and machinery or in cleaning underground mining sites.

WELDING MACHINES/AIR COMPRESSOR/GENSETS

We have on offer hire of the following range of Welding machines, Air compressors and gensets; we hire out Electric welding machines with the ability to do stick and wire feeders. IDEALARC DC600, Miller MgMatic 380, Vantage 500-I, Genset Miller Dimension 562, Electric Afrox (Electrical type), Genset vantage 500 Diesel type Lincoln, Elect IDEALARC DC600 and Air compressor; MIN. 80 CFM.

CATERPILLAR MACHINES

We offer the hire of earth moving equipment as listed below.

- ▶ Front End Loaders
- ▶ Graders
- ▶ Excavator
- ▶ Fork Lifts



LABOUR AND EQUIPMENT HIRE FOR SHUTDOWNS



JECS Mining Ltd provides labor and equipment to assist in shutdowns of processing and crushing plants, we can provide the following labor services;

ARTISAN BOILER MAKERS

This team is experienced in Production of Plant components i.e. Hoppers, Chutes, Vibrating-Feeders, Crushers, Piping, Dram Carriage sledges fabrication: Plant Fitting, Structural Steel Fabrication and erection:, General Plant scheduled and breakdown repair work: Welding (including SMAW, GTAW and FCAW Welding Procedures): Repair and Reclaiming of worn out parts welded components.

WELDERS

Our team of welders are widely experienced and have worked on the rehabilitation a bull Gear and Pinion for the then Second Largest Machine in Africa (dubbed the Zambian Queen) the 12 000kW Walking Drag line. They also worked on the hard facing of the Bucket and Teeth. The team is very conversant with Welding (including Mag, Mig/fig and Coded Welding of Stainless Steel) Rigging and Mechanical Installations with hands on exemplary leadership. We can also provide Riggers, Fitters, Laborers and spotters for any of your shutdown requirements, all personnel undergoes thorough screening and regular training to ensure compliance, quality and safety are maintained.

ELECTRICAL CABLE REPAIRS

We can provide labor service for cable repairs and fabrication and erection of cable trees and lighting towers. Our experienced team is able to perform Upgrading of Electrical Circuiting, such as Earthing circuit of sakatengo a project we as JECS Mining Limited undertook for Kansanshi Mine in Solwezi. Other experiences lie in installation of cable racks, pulling of 185mm x 4 core cables for the 550v AC over head crane, including glanding, termination and commissioning. We are also able to attend to critical high voltage overhead line breakdowns and fitting of 6.6KV trailing cable plugs.

TRAY/BUCKET REBUILDS AND REPAIRS

Jecs Mining Ltd can provide tray and Bucket rebuilds and repairs with the knowledge of our qualified Engineer who has extensive experience to provide complete tray rebuilds and repairs, from dismantling, removal of wear plates to installation of new wear packages and repairs to bodies including blasting and panting to complete the job. We also have experience in rehabilitation of excavator and Dump Truck Buckets through wear facing and build up to achieve reliable and prolonged life of earth moving and mining equipment.

CRANE REPAIR SERVICE

We have trusted workforce and Engineers with vast experience in Cranes, with good attitude and are able to solve many almost impossible breakdowns into up and running situations.

The Crane Service section has a unit of highly experienced workforce of engineers from all backgrounds among them, Electronic engineers, Mechanical engineers, and Auto electricians. Our skilled technicians are able to handle any type of crane equipment and are well versed in major brands to provide impartial and constructive advice.

We have also put up a remote team that could travel nationwide to diagnose and repair cranes at the job site or the owner's facility. Regardless of the location, we can dispatch our team to diagnose the problem, and get the crane back into service as quickly as possible. Services we offer are listed below.

- ▶ 24-hour emergency response
- ▶ Crane reliability survey
- ▶ Crane inspections
- ▶ Crane repair and maintenance
- ▶ Crane modernization
- ▶ Critical component assessment
- ▶ Periodic inspection
- ▶ Crane service overview
- ▶ Crane rigging
- ▶ Assistance in heavy lift erection

Crane servicing and maintenance of all brand from;



GOODS CATEGORIES OFFERED

We as JECS Mining Suppliers & Contractors Limited do offer the following products:

- ▶ Massey Ferguson Tractor spares and accessories
- ▶ Lincoln and Miller welding parts and accessories
- ▶ Terex Backhoe parts
- ▶ High voltage and medium voltage electric cables, Panzerflex Reeling Cables, Flexible cables
- ▶ Cable handling tools , J-Hooks , Strain relief clamps, Universal Coupler skids, Cable buns
- ▶ Solarmet Cables

- ▶ **Electrical spares**
 - Switch controls
 - Signal Line modules
 - Bugs for cv002
 - Drop out fuse links
 - 33Kv Drop out fuses/insulators

CRUSHER FABRICATION AND INSTALLATION

ROAD MAINTENANCE

BUILDING AND CONSTRUCTION



OUR CLIENTS



KANSANSHI MINING PLC
A COMPANY OWNED BY



Konkola Copper Mines plc



HITACHI



BARRICK

SAFETY

We are fully committed to improving Health, safety and environmental performance across all areas of our business in accordance with ISO 14001, OHSAS 18001

We believe that everyone involved in any project should be able to go home safely at the end of the day to his or her family and friends. Job site safety is taken very seriously. We have adopted a "zero injury" policy. We are pleased to be able to bring additional value to our clients through lower insurance rates for each project and offering the guaranteed security of unsurpassed safety. Resulting from our deep commitment to safety, we have established numerous innovative programs and approaches, which will be put in place on your project.

This accomplishment is achieved by carefully pre-planning all safety requirements and training needs. At the same time, we lead and require the same from our subcontractors as we continue to monitor and review the safety needs for any project, including pre-task planning regarding job hazard analysis.

JECS Mining Suppliers & Contractors Limited is proactive in our focus on job site safety. Our superintendent along with our safety director will oversee safety programs and training on your site. All on-site personnel will be held accountable for job site safety. Whether a new employee, trade contractor or veteran worker, if they see a hazard or problem they will be empowered and required to fix the problem or inform the superintendent of the hazard.

This effort will provide for an efficient and safe work environment before the task is even started. Crews will know exactly what is being done, who is doing it and what type of tool or equipment is needed for the specific tasks.



OUR DIRECTORS

Our team of directors who ensure that the company is always moving in the right direction working hand in hand with various personnel is as outlined below.

| Name | Designation | Cell Number | Email |
|-----------------|---------------------------|-------------|-----------------------------|
| Joel Chisanga | Executive Director | 0977568888 | Jecsminings@gmail.com |
| Esther chisanga | Finance and Admin Manager | 0978980405 | sales.Jecsminings@gmail.com |

OUR SUPPLIERS

- ▶ Lincoln Electric
- ▶ Miller, Electric
- ▶ ROQ Steel Gauteng
- ▶ Throne & Derrick International
- ▶ Hardwox Wear Parts Center
- ▶ Enerpac
- ▶ Rapid Allweiler Pumps



CF45

(Regulation 46)

Companies Registration No. **120080070350**

Serial No. **1202909**



SCAN TO VIEW
OUR REGISTRATION DETAILS



Republic Of Zambia

The Companies Act, 2017

(Act No. 10 of 2017)

The Companies (Prescribed Forms) Regulations, 2018

(Section 14)

CERTIFICATE OF INCORPORATION PRIVATE COMPANY LIMITED BY SHARES

This is to certify that J. E. C. S. MINING SUPPLIERS AND CONTRACTORS LIMITED
is on and from the **4th day of January 2008** incorporated as a PRIVATE COMPANY LIMITED BY
SHARES.

Given under my hand and seal at Lusaka, Zambia, this **4th day of January 2008**.



A. BWEMBYA

Registrar of Companies of Companies

For further details relating to this business visit
<http://www.pacra.org.zm>



THE ENGINEERING REGISTRATION BOARD



PRACTISING CERTIFICATE

2024

This is to certify that

**JECS MINING SUPPLIERS AND
CONTRACTORS LIMITED**

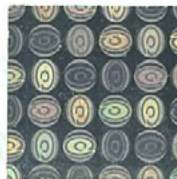
has been authorised to practice
Engineering in Zambia in

**Civil Engineering
Electrical / Electronics Engineering**

Date: **28th June 2024**

EngRB No.: **610801162001252** Class: **C1**

Receipt No.: **555297**



Registrar



017661



NATIONAL COUNCIL FOR CONSTRUCTION CERTIFICATE OF CONTRACTOR REGISTRATION

This is to certify that
J.E. C. S. MINING SUPPLIERS AND CONTRACTORS LIMITED

has in terms of the NCC Act No. 10 of 2020 been registered in

GRADE 4

CATEGORY R

General Roads and Earthworks

(Zambian-Citizen Owned)

**FOR THE PERIOD JANUARY 2024 TO DECEMBER 2024 WHICH ENTITLES THEM TO ENTER INTO
CONSTRUCTION WORKS CONTRACTS IN ACCORDANCE WITH THIS GRADE AND CATEGORY**

Executive Director

429-6/31696

Registration No: 22V59-4RZCO



Director-Registration & Regulation

Serial No: NCCZCO/4R13-01077

Certificate valid only up to 31 December 2024



NATIONAL COUNCIL FOR CONSTRUCTION CERTIFICATE OF CONTRACTOR REGISTRATION

This is to certify that
J. E. C. S. MINING SUPPLIERS AND CONTRACTORS LIMITED

has in terms of the NCC Act No. 10 of 2020 been registered in

GRADE 5

CATEGORY M

Mining Services - Civil Engineering Works

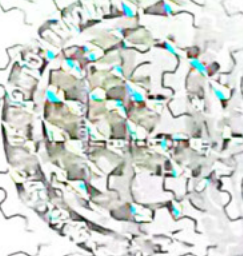
(Zambian-Citizen Owned)

**FOR THE PERIOD JANUARY 2024 TO DECEMBER 2024 WHICH ENTITLES THEM TO ENTER INTO
CONSTRUCTION WORKS CONTRACTS IN ACCORDANCE WITH THIS GRADE AND CATEGORY**

Executive Director

Registration No: 22V59-5M-CBZCO

429-6/
31699



Director-Registration & Regulation

Serial No: NCCZCO/5M-C13-03145

Certificate valid only up to 31 December 2024



NATIONAL COUNCIL FOR CONSTRUCTION CERTIFICATE OF CONTRACTOR REGISTRATION

This is to certify that
J.E. C. S. MINING SUPPLIERS AND CONTRACTORS LIMITED

has in terms of the NCC Act No. 10 of 2020 been registered in

GRADE 5

CATEGORY M

Mining Services - Building and Housing

(Zambian-Citizen Owned)

**FOR THE PERIOD JANUARY 2024 TO DECEMBER 2024 WHICH ENTITLES THEM TO ENTER INTO
CONSTRUCTION WORKS CONTRACTS IN ACCORDANCE WITH THIS GRADE AND CATEGORY**

Executive Director

429-6/31700

Registration No: 22V59-5M-8ZCO



Director-Registration & Regulation
Serial No: NCCZCO/5M-813-03146

Certificate valid only up to 31 December 2024



NATIONAL COUNCIL FOR CONSTRUCTION CERTIFICATE OF CONTRACTOR REGISTRATION

This is to certify that
J. E. C. S. MINING SUPPLIERS AND CONTRACTORS LIMITED

has in terms of the NCC Act No. 10 of 2020 been registered in

GRADE 5

CATEGORY C

General Civil Engineering Works

(Zambian-Citizen Owned)

**FOR THE PERIOD JANUARY 2024 TO DECEMBER 2024 WHICH ENTITLES THEM TO ENTER INTO
CONSTRUCTION WORKS CONTRACTS IN ACCORDANCE WITH THIS GRADE AND CATEGORY**

Executive Director

429-67 31701

Registration No: 22V59-5CZCO



Director-Registration & Regulation

Serial No: NCCZCO/SC13-03147

Certificate valid only up to 31 December 2024



**NATIONAL COUNCIL FOR CONSTRUCTION
CERTIFICATE OF CONTRACTOR REGISTRATION**

This is to certify that
J. E. C. S. MINING SUPPLIERS AND CONTRACTORS LIMITED

has in terms of the NCC Act No. 10 of 2020 been registered in

GRADE 5

CATEGORY B

General Building and Housing

(Zambian-Citizen Owned)

**FOR THE PERIOD JANUARY 2024 TO DECEMBER 2024 WHICH ENTITLES THEM TO ENTER INTO
CONSTRUCTION WORKS CONTRACTS IN ACCORDANCE WITH THIS GRADE AND CATEGORY**

Executive Director

429-6/ 31704 Registration No: 22V59-58ZCO



Director-Registration & Regulation

Serial No: NCCCO/5813-03150

Certificate valid only up to 31 December 2024



WORKERS' COMPENSATION FUND CONTROL BOARD

EMPLOYER COMPLIANCE CERTIFICATE

THIS IS TO CERTIFY THAT

JECS MINING SUPPLIERS & CONTRACTORS

EMPLOYER ACCOUNT NUMBER: 2057006/301

IS REGISTERED WITH THE WORKERS' COMPENSATION FUND CONTROL BOARD AND IS COMPLIANT WITH THE PROVISIONS OF THE WORKERS' COMPENSATION ACT NO. 10 OF 1999 OF THE LAWS OF ZAMBIA

AUTHORISED SIGNATORY

CERTIFICATE NUMBER

ECN_0005001104

DATE ISSUED

25/06/2024

VALID UP TO

31/12/2024



WORKERS' HAVE A RIGHT TO COMPENSATION



CERTIFICATE OF COMPLIANCE

This is to certify that

JECS MINING

Is compliant with the Puma Permit To Work Training accreditation awareness program


William Mwandumba
HSE and Ops Managers
Puma Energy Zambia PLC


Alisara Rah Sendoyi

20/04/23
Date

All Correspondence must be addressed
To: The Assistant Labour Commissioner
Telefax: 0218-821236

quote:website:www.mlss.gov.zm



DL/NWP/101/10/6

In reply please

GOVERNMENT OF THE REPUBLIC OF ZAMBIA

MINISTRY OF LABOUR AND SOCIAL SECURITY

DEPARTMENT OF LABOUR
OFFICE OF THE LABOUR COMMISSIONER
P.O BOX 110100
SOLWEZI
NORTH-WESTERN PROVINCE

11th July, 2024.

The Commercial Manager
Kansanshi Mining Plc
SOLWEZI


LABOUR LAW COMPLIANT LETTER – JECS MINING SUPPLIERS AND CONTRACTORS


Refer to matters of the **Employment Code No. 3 of 2019 of the Laws of Zambia** amongst other Labour Legislations.

We confirm that the company is registered according to the Laws of Zambia and shall comply with all provisions under the **Employment Code Act No. 3 of 2019**. We state that this is not the first time that our Office has issued recommendation letter to your company on the subject.

The recommendation is valid up to **31st December, 2024** and shall be withdrawn when it comes to our knowledge that the company is in breach of any of the Labour Laws and you shall be informed without delay accordingly.

We submit for your information. Kindly contact us if you need any clarification.


Mwaba Nathan Mwila
Principal Labour Officer
For/Assistant Labour Commissioner
NORTH-WESTERN PROVINCE



All Correspondence must be addressed
To: The Assistant Labour Commissioner
Telefax: 0218-821236

quote: website: www.mlss.gov.zm



DL/NWP/101/10/6

In reply please

GOVERNMENT OF THE REPUBLIC OF ZAMBIA

MINISTRY OF LABOUR AND SOCIAL SECURITY

DEPARTMENT OF LABOUR
OFFICE OF THE LABOUR COMMISSIONER
P.O BOX 110100
SOLWEZI
NORTH-WESTERN PROVINCE

11th July, 2024.

The Commercial Manager
FQM Trident Ltd
KALUMBILA


LABOUR LAW COMPLIANT LETTER – JECS MINING SUPPLIERS AND CONTRACTORS

Refer to matters of the **Employment Code No. 3 of 2019 of the Laws of Zambia** amongst other Labour Legislations.

We confirm that the company is registered according to the Laws of Zambia and shall comply with all provisions under the **Employment Code Act No. 3 of 2019**. We state that this is not the first time that our Office has issued recommendation letter to your company on the subject.

The recommendation is valid up to **31st December, 2024** and shall be withdrawn when it comes to our knowledge that the company is in breach of any of the Labour Laws and you shall be informed without delay accordingly.

We submit for your information. Kindly contact us if you need any clarification.


Mwaba Nathan Mwila
Principal Labour Officer
For/Assistant Labour Commissioner
NORTH-WESTERN PROVINCE



All Correspondence must be addressed
To: The Assistant Labour Commissioner
Telefax: 0218-821236

quote:website:www.mlss.gov.zm



DL/NWP/101/10/6

In reply please

GOVERNMENT OF THE REPUBLIC OF ZAMBIA

MINISTRY OF LABOUR AND SOCIAL SECURITY

DEPARTMENT OF LABOUR
OFFICE OF THE LABOUR COMMISSIONER
P.O BOX 110100
SOLWEZI
NORTH-WESTERN PROVINCE

11th July, 2024.

The Commercial Manager
Kansanshi Mining Plc
SOLWEZI


LABOUR LAW COMPLIANT LETTER – JECS MINING SUPPLIERS AND CONTRACTORS


Refer to matters of the **Employment Code No. 3 of 2019 of the Laws of Zambia** amongst other Labour Legislations.

We confirm that the company is registered according to the Laws of Zambia and shall comply with all provisions under the **Employment Code Act No. 3 of 2019**. We state that this is not the first time that our Office has issued recommendation letter to your company on the subject.

The recommendation is valid up to **31st December, 2024** and shall be withdrawn when it comes to our knowledge that the company is in breach of any of the Labour Laws and you shall be informed without delay accordingly.

We submit for your information. Kindly contact us if you need any clarification.


Mwaba Nathan Mwila
Principal Labour Officer
For/Assistant Labour Commissioner
NORTH-WESTERN PROVINCE





Madison House, Plot 318, Independence avenue
 PO Box 37013 Lusaka, Zambia
 Tel: +260 211 378 700 - 5
 E-mail: insure@madison.co.zm
 website: www.madison.co.zm

POLICY SCHEDULE

Policy No : P/08/2001/299507/2019 Class Type : Liability

Name of Insured : JECS MINING SUPPLIER AND CONTRACTORS CURRENCY : ZMW
 Address : solwezi Premium : 1,000.00

Occupation :

Client No : 173134

Date : 11/07/2024

Period of Insurance : (a) From : 11/07/2024
 To : 10/07/2025

(b) Any subsequent annual period for which the insured shall pay and the company agrees to accept renewal premium.

| LOCATION | DESCRIPTION | LIABILITY | LIMITS |
|----------|------------------|---------------------------------|------------|
| SOLWEZI | Public Liability | Limit any one person | 50,000.00 |
| | | Estimated Total Annual Earnings | 100,000.00 |

Any amounts indicate the limit of liability of the Company but does not imply admission of value.

NARRATION

Renewal Endorsement

CLAUSES APPLICABLE

1. ARBITRATION CLAUSE
2. JURISDICTION CLAUSE
3. OCCUPATIONAL ACCIDENTS ONLY
4. PERMANENT DISABILITY AND TOTAL TEMPORAL DISABILITY ONLY
5. AVERAGE CLAUSE

FIRST AMOUNT(S) PAYABLE:

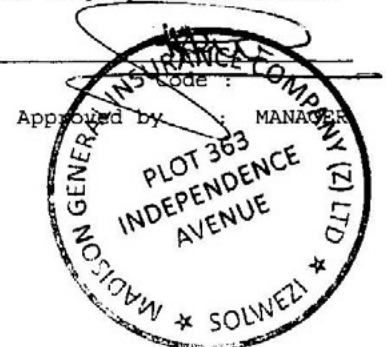
Compulsory Excess 10% Minimum ZMW 1,500.00

Place of Issue : Solwezi For Madison General Insurance Company Zambia Limited

Date of Issue : 11/07/2024

Branch Code : 08 Agency :

Prepared by : ALEX



COVER NOTE

The applicant named in the Schedule below (hereinafter referred to as the "INSURED" having applied to MADISON GENERAL INSURANCE COMPANY ZAMBIA LIMITED (hereinafter referred to as the "COMPANY") is hereby held covered subject to the terms exceptions limits and conditions of the Company policy stated in the schedule against the risks specified herein.

For detailed definitions terms and conditions, refer to the policy wording provided to you (or) download from our website <http://www.madison.co.zm/downloads/>

THE SCHEDULE

| | |
|----------------------------|-------------------------------------------------------|
| INSURED | JECS MINING SUPPLIER AND CONTRACTORS |
| PROPERTY OWNER | |
| POLICY NUMBER | P/08/2001/299507/2019 |
| ADDRESS | solwezi |
| CLASS OF BUSINESS | Public Liability |
| RISKS COVERED | Limit Anyone Event |
| INTEREST | Estimated Total Annual Earnings, Limit any one person |
| SITUATION | SOLWEZI |
| SPECIAL CONDITIONS | Excess 10% Minimum K 1,500.00 |
| SUM INSURED | K 50,000.00 |
| FIRST/RENEWAL PREMIUM LEVY | K 50.00 |
| FIRST/RENEWAL PREMIUM | K 1,000.00 |
| PERIOD OF INSURANCE | 11-JUL-24 - 10-JUL-25 |
| AGENCY | DIRECT |
| DATE OF ISSUE | 11-JUL-24 |

SIGNED  DATE 11-JUL-24
For Chief Executive Officer

MADISON GENERAL INSURANCE COMPANY ZAMBIA LIMITED

No receipt for premium in respect of this insurance shall be considered valid unless on the Company's officially printed form of receipt and signed by a duly authorised representative of the Company.





Madison House, Plot 318, Independence avenue
 PO Box 37013 Lusaka, Zambia
 Tel: +260 211 378 700 - 5
 E-mail: insure@madison.co.zm
 website: www.madison.co.zm

POLICY SCHEDULE

Policy No : P/08/2001/299508/2019 Class Type : Liability

Name of Insured : JECS MINING SUPPLIER AND CONTRACTORS CURRENCY : ZMW
 Address : solwezi Premium : 1,000.00

Occupation :
 Client No : 173134
 Date : 11/07/2024
 Period of Insurance : (a) From : 11/07/2024 To : 10/07/2025
 (b) Any subsequent annual period for which the insured shall pay and the company agrees to accept renewal premium.

| LOCATION | DESCRIPTION | LIABILITY | LIMITS |
|----------|---------------------|------------------------|------------|
| SOLWEZI | Employers Liability | Annual Aggregate limit | 100,000.00 |
| | | Limit any one Event | 50,000.00 |

Any amounts indicate the limit of liability of the Company but does not imply admission of value.

NARRATION

Renewal Endorsement

CLAUSES APPLICABLE

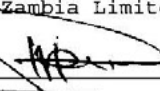
1. ARBITRATION CLAUSE
2. JURISDICTION CLAUSE
3. OCCUPATIONAL ACCIDENTS ONLY
4. OFF PREMISES COVER
5. PERMANENT DISABILITY AND TOTAL TEMPORAL DISABILITY ONLY
6. POLITICAL RISKS EXCLUSION CLAUSE
7. PREMIUM PAYMENT WARRANTY

NIL EXCESS

Place of Issue : Solwezi For Madison General Insurance Company Zambia Limited
 Date of Issue : 11/07/2024

Branch Code : 08 Agency :
 Prepared by : ALEX



Approved by: 
 Code: _____
 MANAGER

COVER NOTE

The applicant named in the Schedule below (hereinafter referred to as the "INSURED" having applied to MADISON GENERAL INSURANCE COMPANY ZAMBIA LIMITED (hereinafter referred to as the "COMPANY") is hereby held covered subject to the terms exceptions limits and conditions of the Company policy stated in the schedule against the risks specified herein.

For detailed definitions terms and conditions, refer to the policy wording provided to you (or) download from our website <http://www.madison.co.zm/downloads/>

THE SCHEDULE

| | |
|----------------------------|---------------------------------------------|
| INSURED | JECS MINING SUPPLIER AND CONTRACTORS |
| PROPERTY OWNER | |
| POLICY NUMBER | P/08/2001/299508/2019 |
| ADDRESS | solwezi |
| CLASS OF BUSINESS | Employers Liability |
| RISKS COVERED | Limit Anyone Event |
| INTEREST | Annual Aggregate limit, Limit any one Event |
| SITUATION | SOLWEZI |
| SPECIAL CONDITIONS | |
| SUM INSURED | K 50,000.00 |
| FIRST/RENEWAL PREMIUM LEVY | K 50.00 |
| FIRST/RENEWAL PREMIUM | K 1,000.00 |
| PERIOD OF INSURANCE | 11-JUL-24 - 10-JUL-25 |
| AGENCY | DIRECT |
| DATE OF ISSUE | 11-JUL-24 |

SIGNED  _____ DATE 11-JUL-24
For Chief Executive Officer

MADISON GENERAL INSURANCE COMPANY ZAMBIA LIMITED

No receipt for premium in respect of this insurance shall be considered valid unless on the Company's officially printed form of receipt and signed by a duly authorised representative of the Company.





Madison House, Plot 318, Independence avenue
 PO Box 37013 Lusaka, Zambia
 Tel: +260 211 378 700 - 5
 E-mail: insure@madison.co.zm
 website: www.madison.co.zm

POLICY SCHEDULE

Policy No : P/08/2001/299507/2019 Class Type : Liability

Name of Insured : JECS MINING SUPPLIER AND CONTRACTORS CURRENCY : ZMW
 Address : solwezi Premium : 1,000.00

Occupation :

Client No : 173134

Date : 11/07/2024

Period of Insurance : (a) From : 11/07/2024
 To : 10/07/2025

(b) Any subsequent annual period for which the insured shall pay and the company agrees to accept renewal premium.

| LOCATION | DESCRIPTION | LIABILITY | LIMITS |
|----------|------------------|---------------------------------|------------|
| SOLWEZI | Public Liability | Limit any one person | 50,000.00 |
| | | Estimated Total Annual Earnings | 100,000.00 |

Any amounts indicate the limit of liability of the Company but does not imply admission of value.

NARRATION

Renewal Endorsement

CLAUSES APPLICABLE

1. ARBITRATION CLAUSE
2. JURISDICTION CLAUSE
3. OCCUPATIONAL ACCIDENTS ONLY
4. PERMANENT DISABILITY AND TOTAL TEMPORAL DISABILITY ONLY
5. AVERAGE CLAUSE

FIRST AMOUNT(S) PAYABLE:

Compulsory Excess 10% Minimum ZMW 1,500.00

Place of Issue : Solwezi For Madison General Insurance Company Zambia Limited

Date of Issue : 11/07/2024

Branch Code : 08 Agency :

Prepared by : ALEX





ZPPA

ZAMBIA PUBLIC PROCUREMENT AUTHORITY

Welcome to the e-Tendering Platform
This is your registration information as at 12/07/2024:

| Supplier details | |
|-----------------------------------|----------------------------------------------------|
| Organisation name | J.E.C.S MINING SUPPLIERS AND CONTRACTORS LIMITED |
| Company Registration Number | 120080070350 |
| Tax Payer's Identification Number | 1001874918 |
| ZPPA Registration Number | 38047 |
| Company type | Local Company |
| Address | Plot 4065 Mulilakwenda Road, Chibote House, Kitwe. |
| Postal code | 10101 |
| City | Solwezi |
| Country | Zambia |
| Phone Number | +260760159485 |
| Shareholders | Joel Chisanga; Esther Chisanga |
| CEEC category | Citizen Owned |
| Valid Until | 12/07/2025 |

You have registered in accordance with the Tender Regulations (Public Procurement Act No 12 of 2008) of the laws of Zambia to supply Goods and Services to Public Institutions in the following categories:

Areas of Interest

- 40000000-Distribution and Conditioning Systems and Equipment and Components
- 39000000-Electrical Systems and Lighting and Components and Accessories and Supplies
- 31000000-Manufacturing Components and Supplies
- 44000000-Office Equipment and Accessories and Supplies
- 42000000-Medical Equipment and Accessories and Supplies
- 30000000-Structures and Building and Construction and Manufacturing Components and Supplies
- 41000000-Laboratory and Measuring and Observing and Testing Equipment
- 56000000-Furniture and Furnishings
- 27000000-Tools and General Machinery
- 22101501-Front end loaders
- 22101502-Graders
- 22101509-Backhoes
- 22101701-Earthmoving shovels



ZPPA

ZAMBIA PUBLIC PROCUREMENT AUTHORITY

- 26101101-Automotive motor AC
- 26101107-Pump motor AC
- 26101504-Diesel engines
- 26101510-Rotary engines
- 26111800-Drive components
- 72000000-Building and Construction and Maintenance Services
- 26101900-Internal combustion engine components
- 26101700-Engine components and accessories
- 26111600-Power generators
- 26110000-Batteries and generators and kinetic power transmission
- 26120000-Electrical wire and cable and harness



July 11, 2024

To Whom It May Concern

RE: ENDORSEMENT FOR PREFERENTIAL PROCUREMENT

This is to confirm that **J. E. C. S. MINING SUPPLIERS AND CONTRACTORS LIMITED** has been duly registered, in accordance with the Citizens Economic Empowerment Act No. 9 of 2006 for purposes of satisfying the requirements of Statutory Instrument No. 36 of 2011 (Preferential Procurement Regulations), in the following category: **CITIZEN OWNED COMPANY.**

The validity period of this categorization is from this **11th Day of July 2024 to 10th July 2025.**

Charles Muwe Mungule, PhD
Director General
CITIZENS ECONOMIC EMPOWERMENT COMMISSION

Empowerment House, Plot# 6457, Los Angeles Boulevard P.O. Box 35068, Long Acres, Lusaka. Tel: 0211 254214 / 257205 / 256020
Telefax: 0211 252150 Email: info@ceec.org.zm Website: www.ceec.org.zm



Stanbic Bank

A member of Standard Bank Group

JECS MINING SUPPLIERS AND CONTRACTORS LIMITED

Bank Name: STANBIC BANK ZAMBIA.

Account Name: JECS MINING SUPPLIERS AND CONTRACTORS LIMITED.

Account Number: 9130002976513

Branch Name: Kitwe Branch

Branch Address: Stanbic Bank Corner Obote Ave/President AV P.O Box 21600 Kitwe.

Branch Sort Code: 040206.

Swift Code: SBICZMLX.

CONCLUSION

Jecs Mining Suppliers and Contractors Limited will continue to be instrumental, in pushing forward the expansion and diversification of the company's business. Together with, our team, we will continue to contribute to the economic development of Zambia by improving, on work methods, working culture, developing and taking more viable acquisitions in new areas, of the industrial and commercial sector.



Plot 4065, Chibote House, Mulilakwenda Road, Heavy Industrial Area, Kitwe.



+260978980405 +260955586888 OR (Coordinator-Jecs Mining +260967351147)



Jecsmornings@gmail.com sales.Jecsmornings@gmail.com



